

VEDIC ASTROLOGY



RASHI Characteristics



Aries / Mesh Rashi

The persons born with this sign have a indented dark...



Taurus / Vrishabh Rashi

The person of this sign possesses charming physique with ...



Gemini / Mithun Rashi

The persons born with this sign have small face ...



Cancer / Karka Rashi

The persons under the influence of cancer sign are marked...



Leo / Simha Rashi

This rashi includes complete Magha, Phalguni and first charan...



Virgo / Kanya Rashi

Virgos are shy and sensitive. They usually walk...



Libra / Tula Rashi

The librans are usually thin and tall. They have ...



Scorpio / Vrishchik Rashi

The scorpions are quite serious in nature and with a blend of...



Sagittarius / Dhanu Rashi

This Rashi sign is made up of full Nakshatras of mool and...



Capricorn / Makara Rashi

This Rashi sign comprises of the latter three charans of...



Aquarius / Kumbh Rashi

This Rashi sign consists of last two charans of Dhanishtha...



Pisces / Meena Rashi

This Rashi comprises of the last charan of poorvabhadrapada...



Master Planet : Mars / Mangal

**Chu, Choo ,Che, Chay ,Cho ,La, Lha ,Li, Lee, Lhi ,Lu,
Loo, Lhu ,Le, Lay ,Lo ,A**

The persons born under Aries sign have a bit dark complexioned face, eyes somewhat brown, dwarf or medium height, sturdy and strong body, long neck and they talk cleverly. This rashi includes Ashwini, Bharani and first Charan of Kritika Nakshatras.

The persons of this sign as a rule are solitary by nature; they have smiling faces and are less spoken. They are brisk walkers. They have thin teeth in the lower jaw, upper jaw may sometimes have long teeth protruding out of the mouth. Anger reflects from their faces. They have ample travels and frequent transfers from place to place in life. Service or business they acquire has touring feature. Usually they may have bleeding teeth. They possess limited intelligence. They prefer to work under directions and guidance from others. Their eyes acquire red or pale colour. They have scars on forehead or face. They are temperamental in nature and are prone to fevers and blood diseases. They may have some skin diseases or are prone to them. They have large eyes and rough hair.

They are usually short tempered and impatient in nature. They are ambitious, courageous and vigilant for self-respect. They shape their own destiny by dint of struggle and hard work. They are straight forward, generous and lovers of freedom. They are practical at work and work for welfare in many areas of the social fabric.

They may have weak knees and are allergic to suffocation of closed chambers. Many of them are water phobic. They like to stick to the profession or job they do. They may sometimes be acknowledged as friend offenders in the society because they don't open up with their likes and dislikes. They usually have fewer children. They are gluttonous.

Adverse Years : **1, 3, 6, 8, 15, 21, 36, 40, 45, 56, 63**

Favourable Years : **16, 20, 28, 34, 41, 48, 51**

Taurus / Vrishabh Rashi



Master Planet : Venus / Shukra

I, Ee, Ei, Eh ,U, Oo ,Ae, Ai, E ,Oh, Ou ,Va, Ba ,Bee, Bi,
Vee, Wee, Vi, Wi ,Vu, Voo, Wu, Bu, Boo, Woo ,Vey, Vay,
Way, Wey, Be, Bay, Veh, Weh, Beh ,Vo, Wo, Bo

The person of this sign possesses charming physique with a medium height, have sparkling teeth, fair complexion, attractive face and beautiful eyes. This rashi comprises of the later three charans of Kritika, complete Rohini and the first two charans of Mrigshira Nakshatras.

The people under this sign have sound physique, thick neck and round face. They have curly hair; they may have distinctive image scar on their face. They are labourious and steady but slow workers. They are nurtures of old traditions and taboos.

They seldom lose temper, but when they do so they don't care for the repercussions. They seldom seek the advice of others. They are pleasure lovers and possess serious nature. They make friends easily and are behaviour efficient. Whatever they do, they do efficiently and with total self-confidence. They love music and adore jewellery and fine clothes.

They have regulated habits and possess remarkable tolerance power. They are devotees of respectable people and are obedient to their parents. They acquire riches and develop qualities. They may suffer a lot in the early age of their lives but gradually in the middle age and later in life, they acquire luxuries. They believe in religion and run their family with noble principles. They love travel and have aptitude for purchase and selection of things. They have good power of digestion. They are prone to cold, cough and diseases. They seldom fall sick. They have worry free nature. They feel happy in every situation to which they adapt themselves easily.

Adverse Years : **1, 3, 6, 8, 33, 44, 52, 61**

Favourable Years : **2, 10, 16, 18, 20, 22, 36, 40, 56**

Gemini / Mithun Rashi



Master Planet : Mercury / Budh

Ka, Ca ,Ki, Ke ,Ku, Cu, Koo, Coo ,Gha ,Yan ,Cha, Chh
,Kay, Kew ,Ko, co ,Ha

The persons with Gemini sign have small face, pointing towards chin. They may possess dual nature. They have effective personality, depicting their intelligence, judicious and humane nature. Their nature is versatile, imaginative, pleasant, thoughtful and adaptable. This rashi sign covers the last two charans of Mrigshira; complete Ardra and first three charans of Punarvasu Nakshatras.

The people of this sign usually have thin physique, are tall in height, medium complexion, dark eyes, thin hair. They are generally soft-spoken, with good power of oration. They are learned people with good command of language. They use phrases frequently while talking. They lean while walking. They have pointed nose and long organs of the body.

They are fast at work. They advance their logic in talk, conversations. They love change and possess foresightedness. As a rule, they are short tempered but cool down quite easily. They can consistently work without feeling fatigue, which adversely affects their health. They get help from friends and relatives. They are more passionate towards sex. They learn quickly the traits of their service or occupation and are usually successful. They usually have big families. They are prone to addictions. They are comedians by nature. Professions of Engineering, architecture or apparel are of their taste. They are religious. They rise quite late in their lives. They are prone to cold and eye diseases. They have poor digestive power.

Adverse Years : 1, 3, 6, 8, 33, 44, 52, 61

Favourable Years : 2, 10, 16, 18, 20, 22, 36, 40, 56

Cancer / Karka Rashi



Master Planet : Moon / Chandra

Hi, He ,Hu, Hoo ,Hey, Hay ,Ho, Hau ,Da, Dha ,Di, Dee,
Dhe ,Du, Doo, Dhu ,De, Day, Dha ,Do, Dho

The persons under the influence of cancer sign are sensitive, conservative. They are introverts. They love occult science. They are sympathetic, energetic and imaginative. They usually live outside their native place. The sign includes last charans of Punarvasu, full Pushya and full Aashlesha Nakshatras.

They are water lovers. They like natural scenery. They love traveling and roaming. Their upper jaws are usually big. They possess round face and long organs of body. They are brisk in walking; they are fearless and somewhat rough in talks but are straightforward. They love the opposite sex. Sometimes are bigamous. They are inventive and intuitive and are hurt easily. They are obstinate, non-emotional and show less hospitality and quite often are sentimental.

They are slow workers. They have protruding hips and have slanted vision sight. They obtain quick gains of their company. They also acquire inherited property. They love luxuries in life and are usually pious people. They are prone to gastric ailments. They love fine arts like drama, music, acting etc.

They are showy people. They often catch diseases. They have soft bones and are good critics. They are highly prone to chest and lung infections. They have moles, scars, warts etc., on the left side of their body.

Adverse Years : **5, 25, 40, 48, 62**

Favourable Years : **4, 16, 32, 36, 54**

Leo / Simha Rashi



Master Planet : Sun / Surya

Ma ,Mi, Mee ,Mu, Moo ,May, Me ,Mo, Mau ,Ta ,Ti, Tee
,Tu, Too ,Te, Tay



This rashi includes complete Magha, Poorva Phalguni and first charan of Uttara Phalguni. The people of this sign are courageous, tall in height and have powerful physique and broad chest. They possess impressive and commanding personality. They are born with leadership qualities and have magnetic power of attraction.

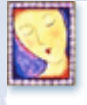
They have reddish complexion. They have strong bones, broad forehead, beautiful eyes and big nose. They are ambitious and have dominating nature. They seek such occupations like military, police services or administrative services.

They are proud, pious and clean hearted. They get fewer results for their deeds but are never disappointed. They love travels of hills and are adventurous. They like fast driving and fast moving vehicles. They achieve rise in destiny very late sometimes above 30 yrs of age. They have small families. Their pitch of voice is high. They are ambitious, autocratic, independent, strong-willed, suspicious, violent, ill tempered and jealous. They are strong and rough towards their subordinates.

Adverse Years : 5, 13, 28, 36, 48

Favourable Years : 10, 15, 25, 39, 53, 66

Virgo / Kanya Rashi



Master Planet : Mercury / Budh



To, Tau ,Pa, Pha ,Pi, Pee, Phi ,Pu, Poo, Phu ,Sha ,Ana, Ane, Na ,Th ,Pe, Pay, Pha ,Po, Pau, Pho

Virgoans are shy and sensitive. They usually walk with a curved neck. Smiling is a peculiar sign of their nature. They are practical, intelligent and love refinement in life.

This sign is made up of the last three charans of uttara phalguni, Hasta, and the first two charans of Chitra Nakshatras.

The persons with the influence have lively smiling faces, and carefree gait. They are lazy and lethargic by nature. They are slow workers also. They have shrill voice. They sometimes lose luster of body.

They are intelligent, middle-heighted. They are artisans by nature. They are observant, patient, sensible, studious, soft spoken, and logical. They do not reveal their secrets. They are shrewd but discrete.

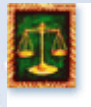
They fall victims to stomach ailments like diarrhoea, loose motions, stomach aches. Allergy of skin is also their ailment.

Travel is their favourite passion. They seldom lose temper. Lottery, speculation is their taste. Usually they shift from their place of birth. They acquire estate or property at the fag end of life.

Adverse Years : **4, 16, 23, 36, 55**

Favourable Years : **10, 15, 25, 39, 53, 66**

Libra / Tula Rashi



Master Planet : Venus / Shukra

Ra, Rha ,Ri, Ree, Rhi ,Ru, Roo, Rhu ,Rey, Ray, Rhe ,Ro, Rau, Rho, Rhau ,Ta ,Tii, Tee, Thee, Thii ,Tu, Thu, Tho ,Te, The, Tay



The Librans are usually thin and tall. They have conspicuous veins. This sign includes the last two charans of Chitra, Swati and three charans of Vishakha Nakshatras.

They are logical with their nature and are dominated by balance and harmony. They are sensitive, curious, will - principled, gentle, critical, good in perception, but are intolerant. Charming and easily mixing with people around are their sterling qualities. They are pious and spiritual. They are logical and as such balance all their deeds and relations with logic.

They speak less but believe more in action. They are learned, intelligent, and helpful to others and do social work. They may have a thick nose but are attractive. They believe in religion. They are repellent to opposite sex. The early stages of their lives are usually marked with hardships, but destiny shines to them between 32-35 of their age.

Great people help them. They are likely to have skin disorders like boils etc. They impress people effortlessly. They are prone to kidney diseases. They marry usually rich spouse. They come up in life in their native place itself.

Scorpio / Vrischik Rashi



Master Planet : Mars / Mangal

To, Tho ,Na, Nau ,Ni, Nee ,Nu, Noo ,Ne, Nay ,No, Nau ,Ya
,Yi, Yee ,Yu, Yoo

The scorpions are quite serious in nature mixed with a blend of jealousy. The sign comprises of the last charan of Vishakha, full Anuradha and Jyeshtha Nakshatras. The people with this sign are trustworthy, honest, truthful and sincere. They have big teeth, big jaws, fair complexion, medium height and fat body. They are of medium height and possess fat body appearance.

They are short tempered, self-confident and courageous people. They normally seek jobs associated with chemicals, army and technology. They are also successful in business. They are violent and do not care for repercussions in scuffles and trifles. They sometimes harm their health by addictions. They use rough language and are straightforward in their speech. They do and finish their work quite fast but irritate others by their nature.

They speak less but believe more in action. They are learned, intelligent, and helpful to others and do social work. They may have a thick nose but are attractive. They believe in religion. They are repellent to opposite sex. The early stages of their lives are usually marked with hardships, but destiny shines to them between 32-35 of their age.

They are clever in earning. They don't have good relations with their brothers and sisters. They may have scars on hands and legs. They are impatient and love rituals more than truth. Though they are outspoken, a soft heart within them worries about children usually surrounding them.

Adverse Years : **11, 28, 38, 52, 62**

Favourable Years : **8, 23, 32, 44, 64**

Sagittarius / Dhanu Rashi



Master Planet : Jupiter / Guru

Ye ,Yo, Yho ,Bha ,Bhi, Bhee ,Bhu, Bhoo ,Dha ,Pha, Fa
,Dhaa, Dhha ,Bhe, Bhay

This Rashi sign is made up of full Nakshatras of Mool and Poorvashada and the first charan of Uttarashadha. The people under this sign are men of principle, following their religion. They are the nucleus of their families, earning for all.

They have great potentials, happy and lucky attitude towards life. They are enterprising, logical, leaders, have healthy attitude towards life. They gain popularity through their actions and intelligence. They are optimistic, truthful and generous. They are loyal, independent, modest, and virtuous. They attain their goals in life. They are usually born in rich families and do not acquire riches by their efforts.

They have long faces and necks and other parts of body attractive but conspicuous. They are soft-spoken and quite popular. They stick to their friendship. They are courageous but tolerant. They lose their hair of their head early. They work without thinking of fruits. Even if they are traders they are honest. They are quick to anger; are more idealistic and dominating. They attain rise of destiny at the age of 22-23 years.

Adverse Years : **2, 10, 18, 31, 38, 42**

Favourable Years : **9, 18, 36, 45, 54**

Capricorn / Makara Rashi



Master Planet : Saturn / Sani

Bho, Bhau ,Ja ,Ji, Jee, Jhi ,Khi, Khee ,Khu, Khoo ,Khey,
Khay ,Kho, Khau ,Ga ,Gi, Gee, Ghee

This Rashi sign comprises of the first three charans of Uttarashad, Shravan complete and two charans of Dhanishta Nakshatras. The people under this sign are thin in body, long-necked and have thin teeth. They have hard hair on their scalp. They have strong bones. Sharpened chin is usually noticeable. They are stable and serious in nature. They set high standards for themselves. Sometimes their private and social lives are different. They are critical in nature and even do not spare themselves in criticism.

They are slow workers but work confidently only. They are usually seen having large families. They are usually not sensitive about means but aim at the end only.

They are introverts and are reserved in nature. They are highly ambitious and try utmost to acquire higher status in life. Their will power is strong. They are disappointed when they fail to achieve the goal they aspire set goal in their life. The seers and sages are also found under this sign. They may have to face rivalry and strong enmity in life. They are showy sometimes. Rise in destiny is marked at 32-33 years of age. They develop ailments associated with allergies, hypertension and weak-back.

Adverse Years : **5, 13, 27, 36, 57, 62, 67, 72**

Favourable Years : **10, 20, 34, 55, 65**

Aquarius / Kumbh Rashi



Master Planet : Saturn / Sani

Gu, Goo, Ghu ,Gey, Gay, Ghe ,Go, Gau, Gho ,Sa, Sha ,Si,
See, Shi, Shee ,Su, Soo, Shu, Shoo ,Say, Shaa ,So, Sho
,Da

This Rashi sign consists of last two charans of Dhanishta ,Shatbhisha complete and the first three charans of Poorvabhadrapada Nakshatras. Aquarians are lovers of personal freedom. The height of the body is dwarf or medium. The forehead is small and face less attractive. They are imaginative, serious and spiritual in nature. Their back is wide and sound. They are behaviourists, kind and helpful. They tend to hide their character and are attracted to the opposite sex.

They do not make friends easily but like the friends they have. They are afraid of sins. They acquire friends of higher status and caliber.

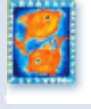
They are of fair complexion and have fatty fore and hind limbs. They are emotional and cannot see the adversities of others. They are affected with headaches, indigestion and stomach irregularities. They are theists and believe in religious values. They are attached to their spouses and are called gentlemen. They have to travel for their livelihood and usually have more than one source of income.

They are unprejudiced, frank, tolerant, quick-witted, practical, intuitive and imaginative. They inherit property but face litigation, sometimes of disputes in the process of inheritance.

Adverse Years : **2, 28, 33, 48**

Favourable Years : **11, 25, 35, 46, 56**

Pisces / Meena Rashi



Master Planet : Jupiter / Guru

Di, Dee ,Du, Doo ,Tha ,Jha, Ja ,Ana ,De, Day, De ,Do,
Dau ,Cha ,Chi, Chee



This Rashi comprises of the last charan of Poorvabhadrapada, complete Uttara-bhadrapada and Revti Nakshatras. The persons under this sign have good qualities like truthfulness, innocence, logical thinking and love for mankind.

They are dwarf-heighted, have small parts of body and beautiful nose, are lazy by nature but versatile, ardent lovers of pleasure, good writers. They easily trust people. They have simple life. They face dangers in early life and are sometimes courageous and at times timid. They develop friendship with leading and popular people. They do work after meticulously pondering over matters and issues.

They drink more water. They commonly become popular because of their easygoing nature. They tend to be more emotional rather than rational. They have limited concentration and will power. They are gifted with commanding and impressive personality. They sensibly divide their time between work and rest. They are idle and careless, sometimes dishonest in their dealings.

They are afraid of sins. They have good speculative power. They earn large sums all of a sudden in life. They are calm and cool by nature and earn by dint of their own efforts in life. They travel a lot and have many children.

They are unprejudiced, frank, tolerant, quick-witted, practical, intuitive and imaginative. They inherit property but face litigation, sometimes of disputes in the process of inheritance. They are patients of arthritis, stomach ailments, heart and eye diseases. They start earning at 20-21 years of their age.

Adverse Years : 8, 13, 36, 48

Favourable Years : 6, 12, 24, 39, 56

How to Influence Stars and Planets

The Planets bestow benefits and cause ill effects as are aspected in the Rashi. Indian mythology affords ample proof of these. To optimize beneficial results and to mitigate ill effects, our great seers and learned ancestors have worked out prescriptions. Now you see what they are and what they can do for you.



Sun / Surya

Sun is treated as a ferocious and cruel star...



Moon / Chandra

Moon is associated with the functionality of mind...



Mars / Mangal

Mars, a powerful planet, can work out miracles for...



Mercury / Budh

Mercury is adored for bestowing blessings of...



Jupiter / Guru

Jupiter is believed to be a bestower of successes...



Venus / Shukra

Venus Planet is mainly associated with family life...



Saturn / Sani

Saturn is symbolic of cruelty and irritations in life...



Dr.Head / Rahu

The planet Rahu relates to mind, insanity, Epilepsy...



Dr.Tail / Ketu

Ketu is quite influential to make one lovable among...



Sun / Surya

Briefing the Nature of the Planet

Sun is treated as a ferocious and cruel planet. Its nature is hot and it is the controller of sharpness of mind, beauty and energy of body. It is also the master of successes in life and controls the family affairs along with the Mars. Sun is related to fulfilment of desires, eye diseases, care of eyes, leprosy, skin diseases, span and longevity of life, success in fortune.

Favourite Colour : Vermillion Red
Favourite Day : Sunday
Favourite God / Deity : [Lord Shiva](#) and [Goddess Parvati](#)

The ill effects of Sun can be minimised and the good effects can be increased according to Indian mythology by doing the following tasks. Any or all of these, one can select as per one's convenience.

- Choose any Sunday and donate a piece of red cloth to the poor. Sun is associated with red colour. Doing so will please the Sun and its benevolence will increase and its malevolence will decrease considerably.
- Just at Sunrise, worship the Sun, pour pure water in front of the Sun, pray soulfully. It is believed that the Sun will listen to you and bestow its grace to your prayers.
- Lord Shiva, the merciful god, will bless you when worshipped with offerings of red flowers. Offering of such mode of prayer will appease the Sun Planet.
- If possible, donate, according to your capacity, gold or copper on a Sunday to a needy person. But, this should fall within the reach of your budget. This will help to retard the annoyance of the Sun.
- Feeding the needy and poor with roasted grams & Gud (Raw Sugar) on Sunday is one more step to appease the Sun.
- To add effect to your prayers, use red sandal beaded garland in counting of chanting mantras to propitiate Planet Sun.
- Distribute religious books and prayer books as per your capacity on any Sunday. This will help reduce the opposite nature of the Sun.
- Sun is associated with knowledge. So, spread knowledge and your sincere

efforts will please the Sun. Doing this free of cost will bring brighter results.

- Everyday, use at least one cardamom in eating.
- Use Khas (Poppy Seeds) every day as Thandai shake (Cooling Syrup).
- Use a little Mulaiti (liquorice) by chewing a piece of it every day.
- Recline or rest in the shadow of pine trees - think and thank Sun.
- Put an auspicious mark of saffron (Spilus Mark) on the forehead (Red Tilak).
- Copper is a metal related to the Sun. Keep fresh water in a copper vessel covered with a lid overnight and drink this water in the morning.
- Fasting will purify your soul; choose Sundays for your fasting if you are to get the favour of the Sun.
- Speaking truth is a noble virtue. Inculcate the habit of speaking Truth. This will appease the Sun.
- On an Amavasya day (No Moon Day), keep Mounavrat (Total Silence). This can be repeated as many times as you desire to get the grace of the Sun more and more.
- Spare some time every morning for reciting Sun's Vedic mantra.
- Religiously recite Sun's Beej (Seed) Mantra as often as possible.
- Wear ruby on your ring finger. Initially wear it on a Sunday & later continue to wear it.

Sun / Surya

The Sun, according to the Vedas, is the parent of all existing phenomena in the solar system. He is the ruler of all the planets that rotate around him. The Sun is considered to be the soul of Kala Purusha (Kala = time, Purusha = being; combined, it means the being that binds himself to Time).

Its colored is bloodred, its nature is bile-dominated, and it is the lord of the direction East.

It is the ruler of the zodiacal sign, Leo, and is exalted in the sign Aries, debilitated in Libra, and exiled in Aquarius. The Moon, Mars, and Jupiter are its natural friends, and Venus, Saturn, Rahu (dragon's head, or the north node of the Moon), and Ketu (dragon's tail, the south node of the Moon) are its natural enemies. Nakshatras Kritika, Uttra Phalguni, and Uttra Khad are ruled by the Sun.

The Sun gives us vitality and the power of resistance and immunity. It is responsible for our physical makeup – the body's constitution. The Sun gives life force, the power of will, intellect, brilliance, prosperity, success in worldly affairs, wealth, personal, conduct, activity, cheerfulness, good fortune, wisdom, ambition, fame, the understanding of the phenomenal world, and the knowledge of medicine. It also governs our relationship with temples and holy places.

The human spine is specially influenced by the Sun. Pingala Nadi, which represents the Sun, originates at the base of the spine on the right side, is solar in nature, and terminates in the right nostril. The Sun is connected with the right eye in men and the left eye in women. The Sun rules the heart, liver, lungs, head (brain), nerves, and bones.

The Sun also represents kings, government officials, rich and famous people, personnel of royal families. Gemologists, artists, dramatists, jewelers, and creative people. Copper is its metal but it rules over gold, almonds, peanuts, coconut, mustard seeds, wool, red flowers, red sandalwood, and what in India are called "red" cows. It shows its influence from twelve to twenty-four years of age.

An afflicted and ill-aspected Sun gives low and high blood pressure, indigestion, jaundice, cholera, fever, diabetes, appendicitis, hemorrhage, cardiac thrombosis, eruptions on the face, typhoid, tuberculosis, mental problems caused by thinking too much, diseases of the head, epilepsy, and disorders caused by aggravated bile.

Our Opinion

Sun is associated with Health, Pay and Success. A sound mind resides in a sound body. So, acquire sound health getting Sun's favour, thanks to Sun's influence. Carve out success through your sound mind. You will obtain through the Sun's grace, longevity, health, wealth, success in business, occupation etc... we hope and desire so.

Sun / Surya Mantra to Chant

Aum Hring Hamsah Suryaye Namah Aum
Gemstone for SUN is RUBY(Manik)





Moon / Chandra

Briefing the Nature of the Planet

Moon is associated with the functionality of mind. It is believed that the moon controls the power of mind and versatility. It is also believed to provide power of meditation, concentration and resistance against cold diseases.

- Favourite Colour : White
Favourite Day : Monday
Favourite God / Deity : [Lord Shiva](#)

The ill effects of Moon can be minimized and the good effects can be increased according to Indian mythology by doing the following tasks. Any or all of these, one can select as per one's convenience.

- To propitiate Moon, astrologers recommend donation of white cloth to needy and poor on any Monday. It is also authoritatively stated that chanting of "Om Namah Shivaya" for a good length of time continuously leads to please Moon.
- Worshipping Lord Shiva daily keeps Moon immensely pleased to quench even high ambitions of the person concerned, it is stated emphatically in astrology.
- Fasting on Monday brings favours granted by Moon.
- 'Mounavrat' (Total Silence) practiced on Poornima (Full Moon) provides power and strengthening of mind.
- Wearing of Pearl ring on the small finger on any Monday and continuing to wear it thereafter is yet one more piece of advice from our ancestors to please the Moon.

- It is appropriate to recommend that use of "Rudrakshamala" in meditation/worship will increase the power of such observances.
- Astro Scriptures further suggest Tilak (Spilus Mark) of Sandal vermilion to be applied on the forehead.
- Reciting of Moon's Vedic Mantra will enhance good results and achievements.
- Chanting of Moon's Seed Mantra if the Vedic mantra is hard to recite.

Moon / Chandra

Moon is the presiding deity of the element water, and rules over the tides of the sea. The sphere of the Moon is the reservoir of rainwater and thus Moon is the ruler of plants and the vegetable kingdom.

The color of Moon is white. Its nature is wise, and learned. It rules peace of mind, comfort, general well-being, and also the fortune of a person. It shows its influence around twenty-four to twenty-five years of age. The Moon gives illumination, intuitive nature, sensuality, taste, youth, love of poetry, fine arts and music, love of jewelry, attractive appearance, wealth and good fortune. It makes us moody, emotional, and sensitive. It rules milk, grains, liquids, growth, fertility, impregnation, and conception. It influences the infant stage of an individual, which guides his behavior in the later in the later part of his life. It is cold and moist. It also influence childbirth and rules the left nostril, eyesight, the breasts, and the brain (memory). Moon influences travelers, human, fisherman, prostitutes, cooks, nurses, and caterers.

Sun, Mars, and Jupiter and the Moon's natural friends, and Mercury, Venus, and Saturn are its natural enemies. In Rohini, Hast, Shravan, Punarvasu, Vishakha, and Purva Bhadrapad nakshatras it gives good and beneficial effect. It also gives favorable effects if it is in Kritika, Uttra Phalguni, Ashlekhya, Jyestha, Uttra Khad, and Revati nakshatras.

For persons whose Moon is not rightly placed in their natal chart or is ill-aspected, success becomes difficult, sometimes it even becomes difficult to achieve a comfortable life on earth. It makes such people weak or sick in their early years.

An afflicted, debilitated, exiled, or weak Moon causes cold, cough, fever, eye ailments, lunacy, paralysis, epilepsy, hysteria, colic pains, beriberi, intestinal disorders, throat troubles, bronchitis, dysentery, neurosis, typhoid, and cancer.

Our Opinion

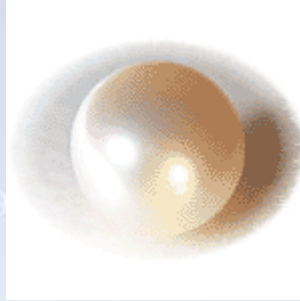
Moon's cool and pleasant rays are significantly influential on medicinal plants and herbs on earth. It is worshipped and praised as 'Oshadhi Raja' or 'King of Herbs'- It's worship wards of chronic diseases and leads to health and success, controls

longevity with sound health.

Moon / Chandra Mantra to Chant

Aum Som Somaye Namah Aum

Gemstone for this Planet – Pearl



Mars / Mangal

Mars is a masculine, dry, and fiery planet. It is said to be the commander-in-chief of the assembly of the nine planets. It is also personified as the god of war. Mars is a warrior by nature-bile-dominated in temperament – and it rules over courage, bravery, patience, self-confidence, leadership abilities, physical strength, forcefulness, violence, animal nature, cattle, land as property, earth, fire, saffron, musk, mercury (the metal), cuts, burns, bruises, anger, hatred, impulsive nature, and insensitivity.

Mars makes its natives short-tempered, argumentative; lovers of weapons, guns, and explosives; commanders; generals; soldiers; and policeman. It also gives them great technical and mechanical abilities and makes them builders, designers, engineers, and good surgeons.

Mars is fond of law and order – and arrangement. It gives energy, determination, great administrative ability, and independent spirit.

Mars gives its best effect from twenty-seven to twenty-eight and up to thirty-two years of age. Its metal is copper; its day is Tuesday.

Sun, Moon, and Jupiter are its natural friends, Venus and Saturn are neutral in friendships, and Mercury, Rahu, and Ketu are its enemies. It is powerful in Pisces and Aquarius, Mrighshira, Dhanishtha, and Chitra and its nakshatras. Leo,

Sagittarius, and Pisces are friendly zodiacal signs and Gemini, Taurus, Libra, and Virgo are enemy zodiacal signs.

If Mars is afflicted or weak, it causes troubles; it makes its natives cruel, violent, aggressive, rough, and rude. It causes eczema, rashes, disorders of the blood and bile, cuts, wounds, electric shocks, gunshots, knife wounds, burns, bruises, anger, hatred, psychic disturbances, poverty, infections, smallpox, plague, tuberculosis, thirst, piles, ulcers, fevers, poisoning, surgical operations, and diseases of the stomach, liver, lungs, nose, and ears. Afflicted Mars gives lack of ambition and motivation, and success in life becomes difficult.

Mars / Mangal

Briefing the Nature of the Planet

Mars, a powerful planet, can work out miracles for its devotees. It can protect its devotees from impending dangers and blood-related ailments. It is instrumental in the acquisition of landed properties, acquiring of status, affluence in profession/occupation and even relieves from steep debts.

[Click Here to Know more about Planet - Mars / Mangal](#)

Favourite Colour : Red
Favourite Day : Tuesday
Favourite God / Deity : [Lord Hanuman](#)

The ill effects of Mars can be minimized and the good effects can be increased according to Indian mythology by doing the following tasks. Any or all of these, one can select as per one's convenience.

- Donation of a piece of Red cloth on any Tuesday is an ideal proposition, recommended by the astrologers, as red is the colour dear to Mars.
- Wearing of coral ring made of Gold or Copper on the Index or Ring finger on any Tuesday and continuing to wear it thereafter is likely to appease Mars.
- Wearing Gold or Copper ring is also recommended to bring effective beneficial results.
- Offering Red Kaner (Red Oleander) in Hawan (Fire Sacrifices) is also an effective measure to appease Mars.
- Fasting on Tuesday is very effective effort to get the grace of the Mars. But, if fasting is not congenial to health, make a habit of using Masoor Pulse (Lentil

Pulse) on Tuesday. This will prove to be substitutive.

- Worshipping Lord Hanuman, the mighty and powerful god and controller of Mars Planet with Red Goolar (Ficus Glomerata) or Kaner (Oleander) for 41 days can bring fruitful results.
- Offering red sandalwood in Hawan (Fire Sacrifice) is advocated by the astrological wise heads.
- Applying vermilion of Saffron to gods, immensely pleases Mars, it is firmly believed.
- Distributing of Gud (Raw Sugar) as Prasad is also beneficial.
- Donating in charity, Red Ox, if the circumstances permit.
- Chanting of Mars Vedic mantra with Red Sandal Beaded Garland.
- Reciting of Mars seed mantra with Red Sandal Beaded Garland.

Our Opinion

Mars is highly benevolent to it's devotees and equally ferocious to ignorers. To fulfill the ambitions of acquiring high status and abundant success, the blessings of Mars are very much needed. Mars softens it's irritant and ferocious nature to it's sincere devotees and he i.e. the devotee is left with no worries and fear in the offing. May Mars bless you in life... We Wish.

Mars / Mangal Mantra to Chant

Aum Bhaum Bhaumaye Namah Aum

[Gemstone for this Planet - Coral](#)



Mercury / Budh

Briefing the Nature of the Planet

Mercury is adored for bestowment of blessings of good education, business, sharp intellect, and pleasing appearance and also to keep off from heat-induced ailments, general debility and depressions. The planet also monitors the family affairs in life. It is related to peace of mind, earnings, intellect, education and business, if it is favourable.

Favourite Colour : Green
Favourite Day : Wednesday
Favourite God / Deity : [Goddess Parvati](#)

The ill effects of Mercury can be minimized and the good effects can be increased according to Indian mythology by doing the following tasks. Any or all of these, one can select as per one's convenience.

- Green is the colour and Wednesday is the weekday dear to Mercury. So, astrologers recommend donation of green coloured clothes on any Wednesday.
- Worshipping goddess Parvati with yellow or green flowers is recommended for better beneficial results.
- Giving away in charity alloy or alloy utensils according to capacity is considered to keep one away from ill effects of Mercury.
- Distributing Khand (Sugar Powder), butter oil, grams to needy persons and fodders to animals will appease Mercury.
- Distributing fruits is another way recommended to please mercury.
- Offering of multiple coloured flowers or flowers of assorted colour in the Hawan (Fire Sacrifices) is another proposition to please Mercury.
- Putting a Tilak (Spilus Mark) on forehead of paste of ivory or wearing bead of ivory are suggested to appease Mercury. Tilak (Spilus Mark) of saffron can also do good.
- Reciting Mercury's Vedic Mantra will also go a long way to appease the planet.
- Chanting Mercury's Beej (Seed) Mantra will also propitiate the Planet.
- Fasting on Wednesdays is another way to get favourable results.

Mercury / Budh

Mercury is the planet of intellect and communication. It can be seen in the morning and evening as a shining star – and sometimes even during the day because of its

power of radiation. Mercury is the smallest planet of our solar system.

Mercury rules education, writers, lecturers, artists, teachers, traders, businessmen, the nervous system, lungs, and intestines. It rules intelligence, speech, self-confidence, humor, wit, astrology, mathematics, and short journeys.

Mercury rules the zodiacal signs Virgo and Gemini. Friends of Mercury are the Sun, Venus, Rahu, and Ketu, Mars, Jupiter, and Saturn are neutral to Mercury, and Mercury maintains enmity with the Moon.

It works well with Ashlekhya, Jyeshtha, Revati, Rohini, Hast, and Shravan nakshatras and gives auspicious results. It gives inauspicious results in Adra, Svati, Pushya, Anuradha, Chitra, and Magha nakshatras.

It gives its best results when its native is between thirty-two and thirty-five years of age.

When ill-aspected, Mercury gives chronic dysentery, constipation, lack of digestive fire, lung diseases, asthma, restlessness, kidney problems, fear, neurosis, and madness.

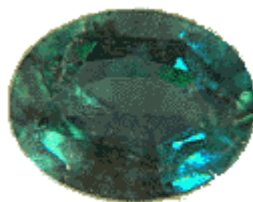
Our Opinion

Mercury's benevolent influence will keep a person in good stead in relation to family, society and occupation linked with accounting and education. It also makes you lovable and favourite among your relatives. May Mercury help and bestow you with all the good ways, we wish.

Mercury / Budh Mantra to Chant

Aum Bum Budhaye Namah Aum

[Gemstone for this Planet - Emerald](#)





Jupiter / Guru

Briefing the Nature of the Planet

Jupiter is believed to be a bestower of successes. It is generally believed that one who is graced by Jupiter, commands respect from others. Cleanliness is a virtue preferred by Jupiter. Jupiter in astrology is named as 'Guru', meaning, biggest of all planets. The persons with grace of favour of Jupiter enjoy elderly quality, towering respect and business. If it is powerful, it can counter the ill effects of other planets comfortably.

Favourite Colour : Yellow

Favourite Day : Thursday

Favourite God / Deity : [Lord Brahma](#), [Lord Shiva](#), Indra, [Goddess Parvati](#)

The ill effects of Jupiter can be minimized and the good effects can be increased according to Indian mythology by doing the following tasks. Any or all of these, one can select as per one's convenience.

- Donating in charity a piece of pale yellow cloth on any Thursday keeps Jupiter pleased.
- Feed an Ox with Gud (Raw Sugar) and gram pulse on Thursdays.
- Wearing Pukhraj (Topaz) on the Index finger on any Thursday is considered to bring in pleasing results. The ring should be continuously worn for a long period starting from any Thursday.
- Distributing sweets and donating Gold or Copper on Thursdays, if the budget allows.
- Worshipping Lord Shiva by pouring some Butter oil on Shiva Linga daily is another way to seek the blessings of Jupiter. Do it for a week.
- Worshipping Lord Brahma, Indra and goddess Parvati with yellow flowers will also increase benefits and mitigate sufferings of the people under Jupiter's influence.
- Distributing religious books in charity, and also yellow fruits is likely to bring magical results.
- Offerings made to Banana tree on Thursdays in the form of worship can also influence Jupiter to bring more pleasures.
- Mounavrat (Total Silence) on Thursday is also very effective.

- Using turmeric beaded garland in reciting Jupiter's Vedic Mantra.
- Chanting of Jupiters Beej (Seed) Mantra using turmeric beaded garland.

Jupiter / Guru

Jupiter is the teacher of the science of light, that is, astrology and astronomy. He is the ruler of the Sun and the Moon and controls the movement of the planets.

Jupiter is a benefic planet, signifier of luck and fortune, and he rules religion, philosophy, spirituality, wealth, and progeny. He is noble, buoyant, dignified, fruitful, optimistic, jovial, and masculine. If favorable, this planet gives name, fame, success, honor, wealth, progeny and good relationship with progeny, and it brings benefits to whatever planets or house it is associated with.

The color of Jupiter is yellow. Thursday is his day, and north-east is his direction. He is big, old looking, and has a pot belly. He is self-illuminating (this is said also in Western astronomy). One of his names is Guru, which means “heavy’ (in weight) and also “teacher”.

Sun, Mars, and the Moon are its friends. Mercury and Venus are its enemies. Rahu, Ketu, and Saturn are neutral in friendship. Its signs of detriment are Gemini and Virgo. In the Uttra Phalguni, Uttrakshad, Punarvasu, Purva Bhadrapad, and Vishakha nakshatras it gives benefits.

Jupiter is very important for a female, because it determines her marriage and her relationship with her husband.

Jupiter rules over the liver, thighs, circulation of blood in arteries, and fat in the human organism. It rules over gold and bronze in metals, wheat and barley in grains, yellow flowers, fruits of yellow color, onions, and garlic.

Jupiter influences people during the fifteenth, sixteenth, twenty-second, and fortieth year of age.

Diseases connected with an afflicted or wrongly posited Jupiter are liver ailments, jaundice, arthritis, swelling, and tuberculosis.

Our Opinion

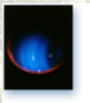
Jupiter is a planet that governs the vital power of the body and brings luxuries, fame

and peaceful life. Jupiter is also considered the king of planets and as such, the ill effects of other planets shun down automatically when Jupiter is powerful. We wish a powerful Jupiter Planet for you.

Jupiter / Guru Mantra to Chant

Aum Brim Brahaspataye Namah Aum

Gemstone for this Planet - Yellow Sapphire



Venus / Shukra

Briefing the Nature of the Planet

Venus Planet is mainly associated with family life, taste and business/livelihood. The benevolent influence of Venus favours accumulation of wealth, jewellery, landed properties, happy home life, success in business and occupations, controlling obesity and fatness.

Favourite Colour : Light Blue, White
Favourite Day : Friday
Favourite God / Deity : [Goddess Lakshmi](#)

The ill effects of Venus can be minimized and the good effects can be increased according to Indian mythology by doing the following tasks. Any or all of these, one can select as per one's convenience.

- Giving away in charity on any Friday, the light blue cloth, rice and Mishri (Sugar Crystals) to the poor is considered to minimize the ill effects of Venus and add the favour of the planet.
- White horse donated in charity is also remedial measure to combat the ill effects of Venus.
- Using white or light blue coloured clothes on Fridays may go to please the Venus Planet.
- Bathing the idol of Lakshmi with Milk, Honey, Ghee (Butter Oil), Curd, Sugar - Together called Panchamrit will please Venus Planet because, She i.e. Goddess Lakshmi is the Lord of Venus.
- Worshiping Goddess Lakshmi with white flowers and sandalwood paste (Tilak) regularly will appease Venus.
- Offering White Flowers and Sandalwood in Hawan (Fire Sacrifice) with the chanting of the mantra of Venus Will bestow the grace of Venus.
- Spraying of lotus scent on oneself and in the house is also recommended.
- Frequent use of Curd in diet also brings favour of Venus Planet.
- Wearing of diamond ring on Friday on small finger and continuing to wear it for a long time substantially improves a person's well-being, earning and status. It is also noticed that, this may also control the obesity of body.
- Reciting Venus Vedic Mantra helps to appease the Venus Planet.
- Chanting Venus Beej (Seed) Mantra.

Venus / Shukra

Venus is feminine and gentle. An embodiment of love, he is a benefic planet and governs the refined attributes, romance, beauty, sensuality, passion, sexual pleasure, marriage, love matters, comforts, luxuries, jewelry, wealth, prosperity, art, music, dance, theater, actors, poets, musicians, the season of spring, rains and aquatic creatures. In the body he rules over the reproductive system, eyes, throat, chin, cheeks, and kidneys.

Mercury and Saturn are its friends and the Sun and Moon are its enemies. Mars and Jupiter are neutral in friendship to Venus even though Venus considers Jupiter its

enemy. Taurus and Libra are the zodiacal signs whom Venus rules, and Venus gives good results when placed in these signs.

When rightly aspected Venus is strong, and it brings wealth, comfort, attraction to the opposite sex in the early part of life, a well-proportioned body, and the attractive features necessary for a sensuous nature. It makes its natives tender, gentle, and considerate; lovers of jewelry, sour (pungent) taste, white dress, decoration, perfume, tasty food, and the fine arts. It inspires them to be poets, musicians, and seekers of truth and knowledge (secret sciences). The native loves the company of the members of the opposite sex, artists, and musicians.

When afflicted or ill-aspected, Venus creates problems in marriage. It causes diseases of the eyes and ovaries. The native may suffer from gout, cysts, swelling of the internal organs, anemia, eating and drinking, venereal disease.

The nakshatras connected with Venus are Bharani, Purva Phalguni, and Purva-shada.

Sagittarius and Capricorn are its friendly signs and Cancer and Leo its enemy signs. Its greatest influence on an individual extends from the ages of twenty-five to twenty-seven.

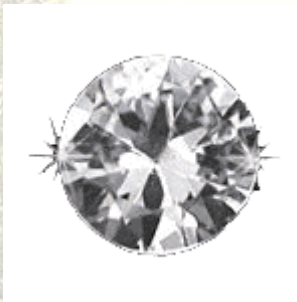
Our Opinion

Venus is considered to be a planet of cold nature. It represents love and harmony. It controls the marital life, family life and the actions of body. It controls pleasures, beauty and taste of life. Let the Venus planet be graceful to you... We wish.

Venus / Shukra Mantra to Chant

Aum Shum Shukraye Namah Aum

Gemstone for this Planet



Saturn / Sani

Briefing the Nature of the Planet

Saturn is symbolic of cruelty and irritations in life for people. It is adverse in nature. It originates apprehensions of chronic diseases, accidents, enmity, financial crisis, depression of mind and retardation in business.

Favourite Colour : Blue, Black
Favourite Day : Saturday
Favourite God / Deity : [Lord Hanuman](#)

The ill effects of Saturn can be minimized and the good effects can be increased according to Indian mythology by doing the following tasks. Any or all of these, one can select as per one's convenience.

- Donating in charity a piece of black cloth, silk cloth, a cow, a buffalo, a mare, black grams and Black Til (Sesamum Seeds) on Saturday will amply influence Saturn to bestow benefits on devotees and to keep away from adverse effects, because these are the colours and objects dear to Saturn Planet.
- Donating a piece of copper to a Dakot (A Person who accepts the offerings forwarded on Shani Dev) on Saturday will reduce ill effects of Saturn.
- Donating in charity, Mustard oil on any Saturday to a Dakot will appease Saturn Planet.
- Wearing blue sapphire on any Saturday on the middle finger after testing its suitability is considered to bring favours of Saturn. Once worn on any Saturday, the ring should be continuously worn for a long time.
- Offering Mustard oil and Black Flowers in Hawan (Fire Sacrifice) will also add the favour of Saturn.
- Giving away in charity iron articles or immersing iron metal in flowing water are suggested to please Saturn.
- Distributing all seven cereals (Wheat, Bajra, Kangani, Moong, Urad, Barley and Black Gram) to the needy/poor on any Saturday will help to appease Saturn.
- Wearing of ring made out of worn out Black horse shoe on the middle finger starting from any Saturday and continuing to wear the same for the period under the influence of Saturn is likely to bring fruitful results in business, giving security against accidents and minimize the depressions of daily life.
- Wearing a ring in the middle finger, made out of old nail taken out of Boat also escorts the ill effects of Saturn Planet.
- Hanging black horse shoe (worn out one) on the door, driving with nails is

strongly recommended to ward off evil effects of Saturn Planet and earn his favours.

- Applying black vermilion on the forehead (Tilak - Spinus Mark) will please Saturn.
- Charity and help given to physically handicap lepers are considered to please Saturn.
- Fasting on Saturdays, especially in winter season appeases Saturn.
- Chanting of Vedic Mantra of Saturn with Rudraksha Mala.
- Reciting of Beej (Seed) Mantra of Saturn with Rudraksha Mala.

Saturn / Sani

Saturn (In Sanskrit - Shani) is darkness, the enemy of light. When it is well placed in the seventh house, or well aspected, it gives its natives integrity, wisdom, spirituality, fame, patience, ability to lead, authority, long life, organizational abilities, sincerity, honesty, love of justice, awareness of right and wrong (because it rules the inner conscience), nonattachment, and asceticism.

When it is ill-posed or ill-aspected it brings miseries, sorrow, delay, obstruction, disappointment, disharmony, disputes, dejection, difficulties, despondency, and destruction (death). It makes its natives undisciplined, irresponsible, dishonest, dull, addicted to drugs, sadistic, greedy, lonely and afraid. Accidents, humiliation, prison, lawsuits, suicidal tendencies, fear of theft, thefts, blame, enmity, pessimism, and premature aging are also attributed to an ill-aspected or ill-posed Saturn.

In the body, Saturn rules the nails, hair, teeth, bones, and nervous system. Diseases of the ears, jaundice, gout, deafness, depression, anxiety, insanity, and asthma are also connected with a Saturn that is ill-aspected or badly placed in the birth chart.

Saturn rules over the zodiacal signs Capricorn and Aquarius. Mercury, Venus, Rahu, and Ketu are its friends and the Sun, the Moon, and Mars are its enemies. Jupiter is neutral in friendship. Its friendly zodiacal signs are Taurus and Gemini and it works well and gives good results in Sagittarius and Pisces. Enemy signs are Cancer, Leo, and Scorpio. Saturn gives its best results – or worst results – between thirty-six and forty-two years of age.

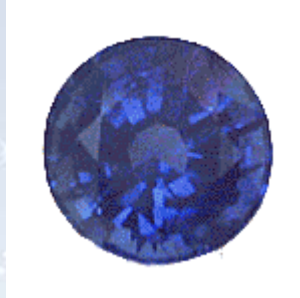
Our Opinion

Saturn is a planet of learning. This planet can often make us depressed or down in dumps. Frustration and mounting inner desires are the signs of Saturn. It is restricted, fearsome, cold and life's greatest teacher. Energy becomes positive against

frustration and depression if the planet is favourable. May the Saturn Planet bless you with all super graces... We wish.

Saturn / Sani Mantra to Chant

Aum Sham Shanaishcharaye Namah Aum



Dr.Head / Rahu

Briefing the Nature of the Planet

The planet Rahu relates to mind, insanity, Epilepsy, fights and trifles, and fruitless wonderings many a times.

Favourite Colour : Cola, Blue, Black
Favourite Day : Saturday
Favourite God / Deity : [Lord Hanuman](#)

The ill effects of Rahu can be minimized and the good effects can be increased according to Indian mythology by doing the following tasks. Any or all of these, one can select as per one's convenience.

- Donation in charity, a piece of cloth of cola colour or blue cloth to some needy person on any Saturday, will gain favours of Rahu.
- Donating in charity if possible Gold or Lead also appeases Rahu.
- Distributing Til (sesamum seeds) and mustard oil on any Saturday is another proposition to please the Rahu.
- Offering Black Flowers in Hawan (Fire Sacrifices) will go a long way to appease Rahu.
- Charity of black/Cola colour blanket in winter and also using black/Cola Colour blankets for self brings favour of Rahu.

- Deep devotion and worshipping Lord Hanuman with favourite Mantras, Hanuman Chalisa regularly at least for 40 days is a powerful source to appease Rahu.
- Eating of oily foods (if not hazardous to health) on Saturday is likely to retard the annoyance of Rahu.
- Burning of Guggul (Gum bdellium olibanum) everyday in worship at least for a month is also recommended.
- Reciting Rahu's Vedic Mantra with Red Sandal or Rudraksha Beaded Garland is likely to bring encouraging results.
- Chanting Rahu's Seed (Beej) Mantra with Red Sandal or Rudraksha Beaded Garland is likely to bring encouraging results.

Dr.Head / Rahu

Rahu is regarded as similar to Saturn in its effect. Smoky blue is its color, instinctual and animalistic its nature. Rahu is interested only in achieving all that gives pleasure, and even if it achieves all it wants, it is never satisfied (which is true of our animalistic nature).

Although Rahu rules no sign of the zodiac, the zodiacal sign Virgo is its sign. Virgo is in fact assigned to Mercury, but Rahu being akin to Saturn and Mercury being a friend of Saturn, Rahu thus has authority over Virgo. Friendly signs are Gemini, Virgo, Libra, Sagittarius, and Pisces. Cancer and Leo are its enemy signs. Mercury, Venus, and Saturn are friendly planets. Rahu is an enemy of Sun, Moon, and Mars. Rahu gives auspicious results in Taurus and Libra.

Rahu is capable of giving power when rightly posited or exalted, and it gives fame, success in politics, money, and physical beauty (i.e., attraction).

Rahu gives its effects between forty-two and forty-eight years of age.

Although it gives beneficial results while posited in the above-mentioned signs, and houses, the gains obtained during its major period do not last long, and one always feels anxious and dissatisfied, even if one gets everything one desires.

Rahu creates physical and mental illnesses that cannot be diagnosed and cured easily. It gives suicidal tendencies, fears, phobias, poisonous bites, murder, theft, imprisonment, and diseases like cholera, dysentery, skin diseases, swelling of the uterus, and constipation.

Our Opinion

Rahu being a shadow planet is magnetic and impulsive. It makes the person self-

centred and hypnotic. But when graces, it is powerful than any other in the faith. We wish that Rahu might bestow all the graces on you.

Dr.Head / Rahu Mantra to Chant

Aum Ram Rahuve Namah Aum

Dr.Tail / Ketu

Briefing the Nature of the Planet

Ketu is quite influential to make one lovable among the people in a social circle. It bestows love for god and high values. Ketu is also denoted as the representative of bringing luxuries and wealth if it is favourable. Ketu is also a sign of action, intuition and innovation.

Favourite Colour : Smoke Coloured
Favourite Day : Saturday
Favourite God / Deity : [Lord Bhairav \(An Incarnation of Shiva\)](#)

The ill effects of Ketu can be minimized and the good effects can be increased according to Indian mythology by doing the following tasks. Any or all of these, one can select as per one's convenience.

- Donating in charity blankets, iron and Black Til (Sesamum Seeds) on Saturday.
- Distributing all seven cereals (Wheat, Bajra, Kangani, Moong, Udad, Barley, Gram) to needy and poor on any Saturday.
- Wearing of smoke coloured clothes will immensely please Ketu to be benevolent.
- Worshipping Lord Hanuman or Bhairav everyday with Red Flowers and Dhoop.
- Eating of coconut and distributing the same in charity to the needy people.
- Offering of Smoke coloured flowers in fire sacrifice.
- Wearing of Lehsunia (Cat's Eye) in silver ring in the middle finger on any Saturday and continuing to wear for a period
- Burning of Loban (Benzoin) in worship everyday is likely to bring favours of Ketu.
- Reciting of Ketu's Vedic Mantra can bring blessings of Ketu Planet. The chanting of mantras is recommended with Red Sandal Beaded garland or

Rudraksha Beaded Garland.

- Chanting of Ketu's seed Mantra can bring blessings of Ketu Planet. The use of Red Sandal beaded Garland or Rudraksha Beaded Garland is recommended.



Dr.Tail / Ketu

Ketu is the rest of the body of Rahu, it bestows spiritual tendencies, asceticism, and nonattachment to worldly desires and ambitions. Ketu is also a half-planet that bestows wisdom, powers of discrimination, and gyana-spiritual knowledge, the knowledge of the self. It gives psychic abilities to its natives and makes them masters of the healing arts, natural healing, healing herbs, spices, foods, tantric healing, healing persons affected by evil spirits and ghosts.

Ketu's sign is Pisces – as Rahu's is Virgo. The sign Pisces belongs to the guru, Jupiter, and Ketu also has dominion over it.

Ketu's body is supposed to be composed of a man's torso in its upper half and a fish body as its lower half.

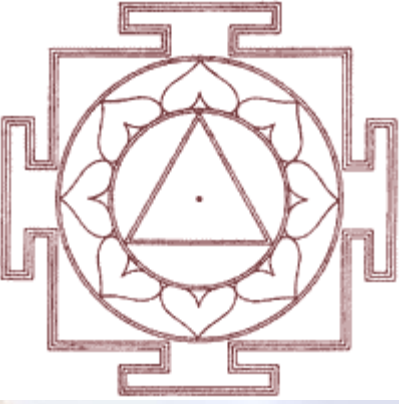
Ashvini, Mul, and Magha nakshatras are Ketu's nakshatras. Gemini, Virgo, Sagittarius, Capricorn, and Pisces are its friendly signs. Cancer and Leo are enemy signs. Ketu is a friend of Mercury, Venus, and Saturn. Jupiter is neutral in friendship. Sun, Moon, and Mars are Ketu's enemies. It is powerful in Taurus, Sagittarius, and Pisces.

When afflicted or ill-posed, Ketu gives imprisonment, accidents, fear, anxiety, leprosy, skin diseases, starvation, and death by starvation. Ketu makes people conspirators and gives nightmares. It gives pain in joints, diseases of joints and nerves, and excessive heat in the body.

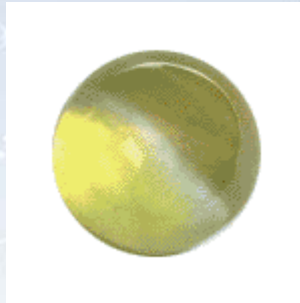
Our Opinion

Changeability is the order of Ketu. It combines in it the virtues of hard work and sensitivity along with confusion. But, when it is favourable, it brings fabulous fortunes and miraculous success. May the planet bless you with its graces... We Wish.

Dr.Tail / Ketu Mantra to Chant



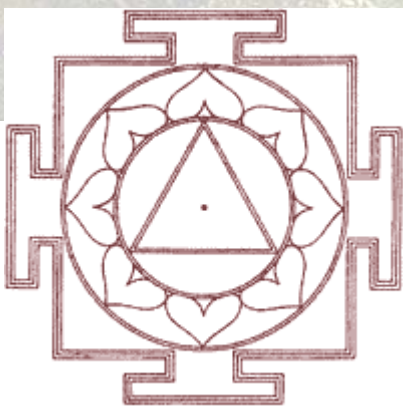
Aum Kaim Ketave Namah Aum



GEMS STONES

From the very dawn of civilization, man has been fascinated by brilliant, shiny, colourful shells, stones and crystals. Their possession made him more important than others. Gems have always been regarded as bringers of peace, prosperity and happiness. Favourable gems bring about name, fame, power and make life easier. Ancient scriptures from across the world have praised gems as powerful agents of energy that influence human fate and destiny, induce good energy and expel the negative energy that produces sickness and suffering.

In Tantra Sara, a major tantrik scripture, the human body is stated to be an island of nine gems. These nine gems known as nav-ratnas correspond with the nine dhatus(ingredients) of which the human body is composed. The Tantra Sara gives a clear statement of their correspondence to the nav-ratnas, which is very helpful in understanding the relationship of gems with the human organism. Wearing these gems influences the dhatus and the psychophysical well-being.



The puranas present beautiful stories about the origin of gems and their relationship with the nine planets. The nav-ratnas (nine gems) are divided into two groups:-**Precious** and **Semi-precious**. Diamond, pearl, Ruby, Blue-Sapphire and Emerald are precious gems whereas hessonite, yellow sapphire, cat's eye and coral fall in the category of semi-precious gems. This

division is based neither on the market value of the gems nor on their brilliance, luster or durability but on their utility and their influence on the human psyche, body, chemistry and electro magnetic field.

There is no disagreement in the relationship of gems to planets. Most Indian astrologers and gem therapists agree on the use of gemstone related to the moon sign (rashi). (The moon sign means the placement of moon in a particular sign of the Zodiac). It is not always beneficial to select gemstones just because they are related to moon sign (rashi). To wear a gem, is to add the energy of the planet related to the gem and if the planet is badly aspected it will only add to one's problems. Hence it is always necessary to consult a gem therapist or a good astrologer before selecting a gem.

It is always advisable to wear the rings of different gems on different fingers. As a general rule, the ring finger is the best for wearing rings, but as each finger is related to a particular planet, the ring should be worn on the finger connected with the planet. This belief is quite popular and sometimes we see people wearing rings on many fingers. There is also distinction between the right and left hand: the right hand is solar and the left hand is lunar. If a person seeks balance in life then he has to wear a ring with the gem, related with the planets Sun, Mars, Saturn, Rahu and Ketu on the left hand (i.e solar gems on the lunar hand). The gems related with Moon, Mercury, Venus and Jupiter should be worn on the right hand. Hence wearing gems on the appropriate fingers, would bring good health, prosperity, name and fame, saves one from wild animals, accidents, evil effects of poison and negative effects of ill-aspected planets.

From the very dawn of civilization, man has been fascinated by brilliant, shiny, colourful shells, stones and crystals. Their possession made him more important than others. Gems have always been regarded as bringers of peace, prosperity and happiness. Favourable gems bring about name, fame, power and make life easier. Ancient scriptures from across the world have praised gems as powerful agents of energy that influence human fate and destiny, induce good energy and expel the negative energy that produces sickness and suffering.

In Tantra Sara, a major tantrik scripture, the human body is stated to be an island of nine gems. These nine gems known as nav-ratnas correspond with the nine dhatus (ingredients) of which the human body is composed. The Tantra Sara gives a clear statement of their correspondence to the nav-ratnas, which is very helpful in understanding the relationship of gems with the human organism. Wearing these gems influences the dhatus and the psychophysical well-being.

The puranas present beautiful stories about the origin of gems and their relationship with the nine planets. The nav-ratnas (nine gems) are divided into two groups:-Precious and Semi-precious. Diamond, pearl, Ruby, Blue-Sapphire and Emerald are precious gems whereas hessonite, yellow sapphire, cat's eye and coral fall in the category of semi-precious gems. This division is based neither on the market value of the gems nor on their brilliance, lustre or

durability but on their utility and their influence on the human psyche, body, chemistry and electro magnetic field.

There is no disagreement in the relationship of gems to planets. Most Indian astrologers and gem therapists agree on the use of gemstone related to the moon sign (rashi). (The moon sign means the placement of moon in a particular sign of the Zodiac). It is not always beneficial to select gemstones just because they are related to moon sign (rashi). To wear a gem, is to add the energy of the planet related to the gem and if the planet is badly aspected it will only add to one's problems. Hence it is always necessary to consult a gem therapist or a good astrologer before selecting a gem.

It is always advisable to wear the rings of different gems on different fingers. As a general rule, the ring finger is the best for wearing rings, but as each finger is related to a particular planet, the ring should be worn on the finger connected with the planet. This belief is quite popular and sometimes we see people wearing rings on many fingers. There is also distinction between the right and left hand: the right hand is solar and the left hand is lunar. If a person seeks balance in life then he has to wear a ring with the gem, related with the planets Sun, Mars, Saturn, Rahu and Ketu on the left hand (i.e. solar gems on the lunar hand). The gems related with Moon, Mercury, Venus and Jupiter should be worn on the right hand. Hence wearing gems on the appropriate fingers, would bring good health, prosperity, name and fame, saves one from wild animals, accidents, evil effects of poison and negative effects of ill-aspected planets.



Ruby ~ Manik

Ruby is a gemstone of the corundum family and is attractive...



Pearl ~ Moti

Formation of a pearl inside a pearl oyster occurs because of...



Coral ~ Moonga

Coral is a calcareous, skeleton-like deposit of the coral...



Emerald ~ Panna

Emerald is a gemstone of green color belonging to the family...



Yellow Sapphire ~ Pukhraj

A gem of the corundum family, yellow sapphire...



Diamond ~ Heera

Most attractive to the eyes, the diamond is famous for...



Blue Sapphire ~ Neelam

The blue sapphire is a gem of the corundum family...



Hessonite ~ Gomed

A good-quality hessonite, the gemstone of Rahu, is...



Cat's Eye ~ Lehsunia

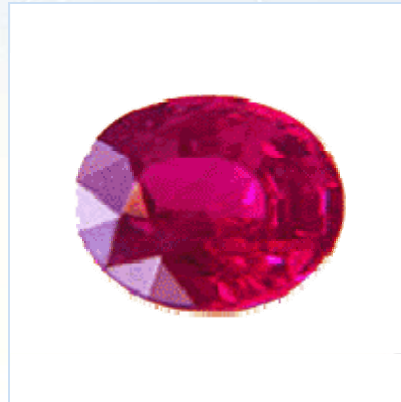
It is an aluminate of beryllium - a mixture of aluminum...



Ruby ~ Manik

Ruby is a gemstone of the corundum family and is attractive...

Ruby is a gemstone of the corundum family and is attractive because of its brilliance, if it is crystal clear and transparent. It is found in a variety of crimson and scarlet red colors ranging from pink to a deep ruddy violet color. It has the smooth and delicate luster of clarified butter. The finest quality ruby has a delicate rose color, similar to the eye of a living cuckoo.



Click the properties below for more info.

General

Planet : **Sun**
 Cosmic Color : **Red**
 Sign : **Leo**
 Element : **Fire**

Time : **Sunrise**
Day : **Sunday**
Metal : **Yellow Gold**

Signs of well-placed Gemstone

- Royalty, high position in administration
- Creative, vital, resistant, determined and decisive
- Successful activity, authority
- Cheerful outlook, good fortune, ambition to achieve great heights, brilliance, optimism, success in worldly affairs

The gemstone helps to prevent the following diseases :

- Hemorrhage, cardiac thrombosis, heated and bilious constitution
- Heart diseases, eye inflammation, low or high blood pressure
- Cerebral meningitis, eruption of the face, typhoid, polypus, epilepsy, bile complaints, sun-stroke, scorches, diseases of the head

Qualities

- Brilliance
- Smoothness
- Hardness
- Luster
- Silky or milky inclusions
- Heaviness in weight, high density
- Color, transparent carmine red with bluish tint like pigeon blood
- Transparency
- Regular shape

Flaws

- Blackish or whitish tint - loss of wealth; bad reputation
- Not homogeneous - brings troubles for father and for self
- Feather - gives bad luck
- Dullness - gives problems with brothers
- Honey color, milky color - destroys animals and pets (Pashudhan)
- Smoky color - divine obstacles, bad luck
- Bluishness in color - gives stomach problems
- Forms similar to shape of trident, triangle, or cross - troubles in having children, bad name, loss of wealth, early death

- Bubbles - makes the gem ineffective
- Brittleness - gives problems in having a son
- Irregular lines inside - domestic quarrels, disturbance
- Dirty - ineffective
- Lack of water and fire (brittle, dull, opaque, lacking glitter) - gives bad luck
- Two colors - restlessness, obstacles, disease, and problems for father and self
- Cracks - gives bad luck
- Spotty (spots of black or honey color) - gives restlessness, problems in having children
- Slit, cavity, hole - bad luck, diseases, weakness
- Flimsiness - gives problems with lightning

Identity

- An imitation ruby appears orange when placed under an ultra violet lamp.
- A crack in a real ruby will not shine and will have a zigzag quality, whereas in an imitation ruby a crack is shiny, straight, and clearly visible.
- If a ruby is placed in cow's milk in a glass jar the milk will appear of rosy color, whereas normally it has a yellowish tint.
- If you place a real ruby in a glass jar, a red hue of light will be seen to emit from the jar.
- Bubbles in a real ruby are rarely found, they are not round and have the same color as the gem, but in an imitation stone bubbles are round, bare, white, and sometimes hollow.
- If a ruby is placed in a silver plate and seen in sunlight the plate will reflect a reddish tint.
- A real ruby is heavier and denser than an imitation or a similar stone.
- If pearls are put together with a real ruby in a silver plate and placed in sunlight, the silver plate will appear blackish, the pearls will have a red hue, and the ruby will shine like the Sun.
- Layers of a real ruby are linear and straight, whereas in an imitation they are circular.
- A real ruby continues shining after it has been x-rayed, but an imitation shines only as long as the source of light is shining on it.
- A ruby will appear dark red from one angle and pale when viewed from the other side.
- If you place a real ruby on an unopened lotus bud it will open up and become a blossoming lotus in a short time.
- If the silky spot, which remains stationary, has bluish tint and does not emit flickering light, the gem is an imitation.
- The color in a natural real ruby is not uniform, whereas in an imitation the color is homogeneous.
- A real ruby, when placed on the eyelids, remains cool longer than an imitation does because of its compact molecular structure. A piece of glass or imitation gem, that is, a synthetic ruby, gets warm quickly.

Ritual

A ruby should be bought on a Sunday, Monday, or Thursday in the ascending moon cycle. It should be bought, set, and worn when the Sun is in Leo and it is Pushya Nakshatra. If the nakshatra is not Pushya, then the nakshatras ruled by the Sun, i.e., Kritika, UtraPhalguni, and Utrashad, are also suitable for it. The stone should be given to the jeweler on the same day and should be set and polished on the same days as mentioned above. The stone should be mounted in an open backed ring made of a mixture of gold and copper and the gemstone should touch the skin of the wearer's finger.

The best time to wear a ruby ring is sunrise.

Before wearing, the ring should be kept for some time in raw cow's milk and should be washed with Ganga water (if available) or water kept in a copper pot or rainwater. After it has been washed, the ring should be kept on a red cloth, on which a sun yantra is drawn with either red sandalwood paste or roli or a mixture of turmeric powder. The person who wants to wear the ring can do the rituals himself. The ring should be placed in front of the idol or engraved copper yantra made in gold, on the red cloth on which the numerical yantra of the sun is drawn. Flowers and incense should be offered to the engraved copper yantra and the yantra and the gemstone mounted in the ring should be worshiped, reciting the mantra of the sun god.

Mantra

Aum Hring Hamsah Suryaye Namah Aum

The Mantra should be recited 108 times. Then the wearer should meditate on the gemstone and wear the ring on the ring finger of the right hand.

The yantra to be drawn on red cloth with red sandalwood paste or roli is as follows :

6	1	8
7	5	3
2	9	4

The following yantra written with red sandalwood paste or roli, engraved on a copper plate should be placed on the cloth asana :

6	32	3	34	35	1
---	----	---	----	----	---

7	11	27	28	8	30
19	14	16	15	23	24
18	20	22	21	17	13
25	29	10	9	26	12
36	5	33	4	2	31

A ring worn by the above methods brings good luck, peace, and prosperity.

Source

Ruby mines are found in Burma, Thailand, Sri Lanka, Kabul (Afghanistan), Tanganyika, and South India. They are also found in mines of upper Burma located in Mogok, which are of crimson red and are believed to be of the highest quality. Rubies found in Thailand are of an inferior quality.

Kabul rubies are brittle, with white spots, though they have a fine color. Rubies found in South India at Kangiyana are of a dull red color and dirty with dark blue and pale tint.



Pearl ~ Moti

Formation of a pearl inside a pearl oyster occurs because of...

Pearl ~ Moti

Formation of a pearl inside a pearl oyster occurs because of the presence of foreign material inside the body of the oyster. To save itself from the undesired material the mollusk coats the object with layer after layer of nacre. It takes many years for a mollusk to produce a pearl of substantial size. The process through which the pearls are formed inside the body of the mollusk is very delicate, and a little disturbance at any stage of development of a pearl can influence its shape and lustre. The finest pearl is that which has no foreign matter in its core. Pearls are obtained from eight sources, which are Sky Pearl, Cobra Pearl, Bamboo Pearl, Hog Pearl, Elephantine Pearl, Conch Pearl, Fish Pearl and Oyster Pearl.



General

Following are the general properties of Gemstone

Planet	:	Moon
Cosmic Color	:	Orange
Sign	:	Cancer
Element	:	Water
Time	:	Evening
Day	:	Monday
Metal	:	Silver

Signs of well-placed Gemstone

- Emotions under control
- The native will have good affluence, good fortune, recognition and fame
- Good memory
- Balanced emotional life

The gemstone helps to prevent the following diseases :

- Throat troubles, asthma, bronchitis, varicose loins, nervous debility, cancer, typhoid.
- Colic pains, worms, intestinal disorders, tumors, peritonitis.
- Eye diseases, lunacy, paralysis, hysteria, epilepsy, cold, cough.

Qualities

A genuine pearl is supposed to have the following qualities :

- Moonlike, shining white color
- Perfectly round, globular shape and size
- Spotlessness and freedom from blemishes (dents, scratches, ridges) and impurities.
- Compactness, which gives it a high specific gravity.
- Lustre, soft glamor, attractiveness and brilliance of reflection
- Smoothness, which gives an agreeable sensation to the eyes

One who wears or possesses a pearl with all of the above mentioned qualities enjoys good fortune and is blessed by the goddess Lakshmi (the goddess of prosperity), lives long and

becomes sinless, and obtains vitality and intelligence. He achieves high position by his wisdom and becomes famous.

A pearl with a yellow lustre brings prosperity. Red-tinted pearls make one intelligent, shining white pearls bring fame, and a pearl with a bluish hue brings good fortune.

A pearl devoid of lustre, that is, dirty, broken, having no gleam of circulating water, black or copper colored, partly white and partly colored, irregular, odd in shape having holes, dents, or sports is defective and should be avoided.

Flaws

- Dullness or absence of lustre - brings poverty or financial crisis: shortens one's life
- A mole-like formation on the surface layer - brings sadness and disease
- Having three corners (triangular in shape) - causes impotence, brings bad luck
- Hole or pouch-like formation - cause leprosy
- Cracks or ridges - wearing of such a pearl is injurious to one's health
- Dusty, having clay or sand particles inside - is devoid of any good or bad effect
- Broken - loss of job, wealth, and earnings
- Protrusion like the beak of a bird - harmful to progeny, brings humiliation
- Dents - bring loss of wealth
- Oval and long in shape - makes one foolish
- A stain on the surface - brings humiliation and is harmful to progeny
- A blister or swelling - injurious to wealth, brings bad luck
- Sheathy, having a thin epithelium and wood-like material inside - is inauspicious
- Copper tint - harmful to brothers and sisters
- Dome-shaped, in which the lower half is composed of foreign material - brings bad luck
- Tiny spots like the marks of smallpox - harmful to progeny
- Flash-eye spot, spot looking like the eye of a fish - loss of progeny
- Square shape and flat - harmful to one's spouse
- Wavy thin line on the surface - brings misfortune
- A juncture line or a girdle - induces fear and is injurious to physical well-being
- Coral-like appearance - brings misfortune and poverty

Cultured Pearls

Cultured pearls are also a natural growth inside the pearl oyster, but they are created by human surgical skill.

A good pearl produced by this process has the same qualities as a genuine pearl - and it is difficult to distinguish between the two. They have a similar effect on the human organism as genuine pearls.

It is firmly believed that wearing of pearl ensure happy conjugal life and protection from widow-hood. Anybody wearing an unblemished Pearl earns riches and is blessed by goddess of wealth Lakshmi. He or she lives long and all his sins are said be washed away. He gets vitality, becomes intelligent and achieves a high position in life. Pearl with a yellow luster brings wealth. A reddish pearl makes one intelligent. White Pearl bestows fame and the Pearl with blue hue is the giver of good fortune.

The wearing of a defective pearl brings troubles. The Pearl, in which there is spot without luster like the hole, that pearl, is likely to cause leprosy to the wearer. If in any pearl there is a spot or sign looking like the eye of a fish, the wearer suffers loss of children. The Pearl, devoid of luster is said to shorten life. The Pearl that is flat brings a bad name to the wearer. The Pearl that is long instead of being round makes the wearer foolish and an idiot. If a side of the Pearl is broken, the wearer of such stones suffers the loss of his livelihood.

The following are the flaws found in Pearls:

1. Cracks on surface
2. Lines on the body of the Pearl.
3. Joint like appearance.
4. Mole of black colour, the wearing of such Pearl gives very inauspicious results
5. Without any luster
6. With spots
7. One with dirt inside it

Identity

- Difference in structure : In genuine pearls the structure is concentric, whereas in the cultured pearl it is parallel, as it is in the mother-of-pearl bead introduced into the mollusk to produce a cultured pearl.
- Difference in the Bore : There is uniformity in the bore of genuine pearls, whereas in cultured pearls it is thin at the starting point and wide in the middle.
- Difference in luster : When culture, imitation, or artificial pearls are treated with a mixture of cow's urine and saltpeter for twenty-four hours, their lustre decreases. Genuine pearls retain their lustre after such treatment.
- Difference in epithelium : It is hard in cultured pearls and soft in genuine pearls.
- Difference can also be detected with the help of a pearl illuminator, but this detection is only possible in the case of drilled pearls. Another method used for undrilled pearls is to x-ray them.

It would be ideal to buy a pearl on a Monday of an ascending cycle when the Moon is in Pushya, Rohini, Hast, or Sharavan nakshatra. Sunday and Thursday are also prescribed as good days for buying a pearl, but Saturday is not a good day in any way for it.

The pearl should be given to the jeweler on the same day, and the ring should be constructed and polished on the same days as mentioned above under the influence of the same nakshatras. The pearl should be mounted in silver. The setting should be open-backed so that the pearl touches the skin of the of the finger.

The best time to wear a pearl ring is evening, or when the Moon is rising.

Before wearing, the ring for the first time, it should be immersed in raw cow's milk for some time and then should be washed with Ganga water, rain water or water kept in a copper pot. After it has been washed, the ring should be placed on a white cloth on which a Moon yantra has been drawn with white sandalwood paste. The person who would wear the ring can do the worship himself. The ring should be placed in front of the silver engraved yantra on the white cloth on which the yantra is written with white sandalwood paste. Flowers and incense should be offered to the engraved silver Yantra and the pearl mounted in the ring should be worshiped by reciting the mantra of Moon god.

Mantra

Aum Som Somaye Namah Aum

The mantra should be recited 108 or 11,000 times and one should meditate on the gemstone as a symbol of the Moon god. After meditating, one should place the ring on the left hand, either on the ring finger or the little finger.

The yantra used for drawing on the cloth with white sandalwood paste is as follows :

7	2	9
8	6	4
3	10	5

The yantra to be engraved on silver is as follows :

37	78	29	70	21	62	13	54	5
6	38	79	30	71	22	63	14	46

47	7	39	80	31	72	23	55	15
16	48	8	40	81	32	64	24	56
57	17	49	9	41	73	33	65	25
26	58	18	50	1	42	74	34	66
67	27	59	10	51	2	43	75	35
36	68	19	60	11	52	3	44	76
77	28	59	20	61	12	53	4	45

The ring worn in this manner brings good luck, neutralizes problems caused by the Moon, gives mental peace, progeny, and financial gains, fulfills the desires of the one who wears it, and cures ailments caused by a weak and afflicted Moon.

Source

Gulf of Manar in Sri Lanka : The pearls found in Manar, are slightly smoky in tinge and lighter in weight than their competitors, the pearls found in the Persian Gulf. Indian gem dealers nowadays believe that the best pearls are found in the Persian Gulf.

The Persian Gulf : The most lustrous and durable pearls are found on the banks of the Bahrain Islands in the Persian Gulf. They are famous as Basra pearls in India.

Bay of Bengal : The pearls obtained from the Bay of Bengal are globular, rose-colored, and very attractive. But they are softer than Basra pearls and so are less durable.

South Indian Fisheries : Pearls are also found in southern India and in Tamil Nadu and Andhra Pradesh. Tuticorin in South India has been a famous source of pearls for several centuries. Pearls found in Tuticorin are similar to Basra pearls from the Persian Gulf.

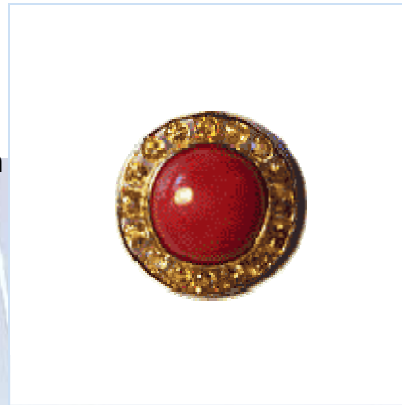


Coral ~ Moonga

Coral is a calcareous, skeleton-like deposit of the coral...

Coral ~ Moonga

Coral is a calcareous, skeleton-like deposit of the coral polyp- a tiny invertebrate that dwells in quiet waters and is found at depths ranging from 20 to 1,000 feet. The color of coral depends on the depth at which it is found - below 160 feet its color is light. The best-colored corals are found between depths of 100 and 160 feet. It is found in many shades of red and pink. The color usually ranges from white to pink to vermilion red and deep scarlet. Corals of yellow ocher, cream, chocolate and black color are also available. A good coral that is related to the planet Mars and recommended by astrologers, gem therapists and jewelers is a deep red coral, which resembles well-ripened bimb fruit or an unripe cherry.



Following are the general properties of Gemstone

Planet	:	Mars
Cosmic Color	:	Yellow
Sign	:	Aries, Scorpio
Element	:	Earth
Time	:	Sunrise
Day	:	Tuesday
Metal	:	Yellow Gold and Copper

Signs of well-placed Gemstone

- Courage, charisma, leadership
- Mechanical and technical jobs
- Rapid advancement and success
- Great energy and motivation
- Physical strength, forcefulness
- Acquiring properties
- Ambition

The gemstone helps to prevent the following diseases :

- Eruptions of the face and body
- General diseases of the blood, muscular system, bone marrow



- Cuts, burns, bruises

Qualities

- Round or oval shape.
- Large, with proportionate thickness
- Heavier than average corals of its size.
- Shininess and the quality of emitting honey-like, lovely and delicate splendor.
- Smooth
- Free of dents, holes, or perforations
- Deep red color.
- Regular shape and even surface

Flaws

- A coral uneven in thickness increases suffering
- A coral having holes, according to the shastras, is harmful for the health of the one who wears it.
- A coral having a crack on the surface or the body brings injuries from sharp-edged weapons.
- A coral having black spots brings accidents and is sometimes fatal.
- A coral that is very light in weight brings misfortune.
- A coral with dents increases suffering and is bad for martial relationships.
- A coral that is broken or has a cutting mark is harmful to peace, prosperity, and progeny.
- A coral having white spots worsens disease and destroys mental peace.
- A coral similar to the color of lacquer (dark brown) gives fear of weapons and thieves.
- A coral having many shades in one piece destroys comfort, wealth, and peace of mind.
- A coral having perforations gives pain in the body and migraine.

Identity

- A true coral changes color according to the physical well being of the wearer. It fades before the disorder in physical health is noticeable and resumes its original color when physical health restored.
- If real coral is placed in a glass of cow's milk, the color of the milk will appear pink or take on a red tinge. Imitation coral will not affect the whiteness of milk.
- A synthetic coral has higher specific gravity than a real coral and it is heavier in weight.
- An imitation coral turns a piece of turmeric root red when rubbed against it.
- An imitation coral produces a distinct sound when rubbed, which resembles the sound of glass being rubbed.

- An imitation coral shows granules in its texture when examined under a magnifying glass.
- If a coral is dropped in blood, blood will thicken around it.

Ritual

A coral should be bought on a Tuesday when the Moon is in Aries or Scorpio, when any of the four nakshatras Mrigshira, Chitra, Annuradha, or Dhanishtha is present. The coral should be bought between sunrise and 11.00 A.M. and should be given to the jeweler within this time. The jeweler should set it on a Tuesday when the Moon is in any of the four nakshatras mentioned above, between the same hours. The stone should be set so that it touches the skin. The coral's weight should be no less than 6 carats. The metal used should be a mixture of copper and gold - any other metal should not be used in the mixture. Preparing a ring on a Tuesday when the Moon is in Capricorn is very auspicious. The best time to wear a coral ring is one hour after sunrise or up until 11.00 A.M. as mentioned above.

Before wearing the ring for the first time, immerse it in raw cow's milk and wash it in Ganga water, rainwater, spring water, or water kept in a copper pot for some time. After being washed, the ring should be placed on a red cloth on which a numerical Mars Yantra is drawn with red sandalwood paste, gorochan (a red calcium from cowhorn), saffron, or roli. An engraved yantra of Mars on copper, or an idol of Mars made in copper should be placed on the red cloth and worshiped. Flowers and incense should be offered after the yantra engraved on copper or the idol is bathed. The yantra and the gemstone set in the ring should be worshiped by reciting the mantra of Mars.

Mantra

Aum Bhaum Bhaumaye Namah Aum

The mantra should be recited 108 or 10,000 times, and then the wearer should meditate on the gemstone as a symbol of Mars. After meditation the ring should be worn on the ring finger of the right hand.

The yantra to be drawn on red cloth with red sandalwood paste or with ground saffron paste made thin like an ink is as follows:

8	3	10
9	7	5
4	11	6

The yantra to be engraved on silver is as follows:

11	24	7	20	3
4	12	25	8	16
17	5	13	21	9
10	18	1	14	22
23	6	19	2	15

After worship the yantra should be wrapped in the red cloth on which the other yantra is drawn and it should either be donated to a priest or kept in a shrine.

Source

The oldest source of precious coral production has been the Mediterranean Sea, which has been used for centuries. Coral of the finest quality is obtained in bulk form from the coasts of Algeria and Tunisia. Other profitable sites for coral deposits are the coasts of Spain, France, Corsica, Sardinia, and Sicily, as well as the Red Sea and the Persian Gulf. Corals are also found off the northwest coast of Africa, the coasts of Australia, and the Indian Ocean. Corals found off the shore of Spain are deep in color. Corals are also found in the seas around Japan, and Japanese corals are in demand because of the skillful craftsmen of Japan, who produce finely wrought corals.

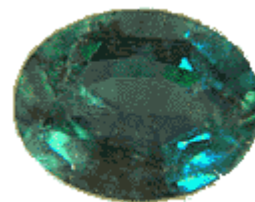


Emerald ~ Panna

Emerald is a gemstone of green color belonging to the family...

Emerald ~ Panna

Emerald is a gemstone of green color belonging to the family of beryl gems. This gemstone is rare because it is very difficult to find a flawless emerald. Most emeralds are defective, having a feather - like crack and inclusions. To find an emerald that is of rich green color, perfectly transparent, with a velvety reflection and high specific gravity is difficult.



General

Following are the general properties of Gemstone

Planet	:	Mercury
Cosmic Color	:	Green
Sign	:	Gemini, Virgo
Element	:	Earth
Time	:	Sunrise
Day	:	Wednesday

Qualities

- Compactness, which gives it high specific gravity
- Retains its color and lustre in all kinds of lights and shades
- Vitreous lustre, radiance, luminescence, brilliance
- Smoothness that comes when the stone has a fine finish
- Soothing touch and pleasant sight, which gives peaceful vibrations and captivates the heart
- Fine cut, which illuminates it from all sides
- Transparency, which makes it rare and costlier than diamonds
- Rich green homogeneous color that is deep and pleasant, like a blade of fresh grass
- Velvety reflection

Flaws

- Dullness; devoid of inner glow
- Harsh appearance smokiness
- Odd form, flatness, unevenness, depression
- Presence of a hole
- Brittleness
- Low specific gravity
- Black or yellow spots
- Emitting bluish reflection
- Foreign matter inside the crystalline structure
- Graininess
- Unevenness of color
- Smokiness
- Micaceous glitter due to the presence of mica, mica particles clearly visible
- Concavity or dent in surface
- Lack of water or glittering look, lustre, luminescence; gem looks dry

- Fissure in the surface
- Brown or blackish yellow color

Such flaws have no merit and should be discarded . Flaws in an emerald create problems and that is why one should not wear the following :

- An emerald having a yellow spot is harmful for one's son.
- An emerald that has a smoky substance, micaceous glitter, threads or visible lines destroys the clan and is harmful to the progeny.
- An emerald having a drop like the honey drop is inauspicious for one's mother and father.
- An emerald having a dent creates fear.
- An emerald with a red spot destroys wealth.
- An emerald having uneven colour or two colours is harmful to vitality and intelligence.
- An emerald that has spots of black or other colors harms one's spouse.
- An emerald that is devoid of water and is dry harms one's pets, cattle, horses and other animals.
- An emerald having a cobweb is harmful to one's physical well-being.

Identity

- When rubbed against a piece of wood an imitation becomes shinier whereas the real emerald does not.
- If a real emerald is placed in a glass pot with water it radiates green light, whereas the imitation does not.
- If a real emerald is placed on a piece of white cloth in such a way that its reflected light can be seen, it reflects green light and the spot where the light falls looks like a green patch of cloth.
- The refractive index of an imitation is lower than that of the real gemstone.
- An imitation emerald has a bright rather than pale hue.
- If a real emerald is placed on the eyes it gives a cool feeling, whereas an imitation becomes warm very quickly.
- If an imitation emerald is rubbed against a piece of turmeric root it makes the turmeric red, whereas a real emerald does not.
- A drop of water on a real gemstone retains its shape and does not spread around like water. Even moving and inverting the gemstone does not harm the drop, whereas in an imitation it does not remain a drop but spreads like water.
- The specific gravity of an imitation is lower than that of a real emerald.
- In an imitation there are white spots.

Ritual

An emerald should be bought on a Wednesday when the Sun is in the northern quarter in an ascending cycle. The gem should be bought and given to the jeweler two hours after sunrise. The emerald in the ring should be set when Ashlesha, Jyeshtha, Revti, or Rohini nakshatra is present - on a Wednesday, Friday, or Saturday when Virgo or Gemini is rising on the horizon.

The best time to wear the ring is two hours after sunrise.

Before wearing the ring for the first time it should be kept immersed for some time in raw cow's milk. Then it should be washed with Ganga-water, spring water, rainwater, or water kept in a copper pot. After it has been washed the ring should be kept in a green cloth on which a Mercury Yantra is drawn with red sandalwood paste, roli, or saffron. An engraved yantra of Mercury on a bronze plate or an idol of Mercury made of bronze should be placed on the green cloth on which the yantra is drawn. The ring should be placed before the yantra engraved on a bronze plate and flowers and incense should be offered to the yantra. The engraved yantra and the gemstone in the ring should then be worshiped by reciting the mantra of Mercury.

Mantra

Aum Bum Budhaye Namah Aum

The mantra should be recited either 108 or 4,000 times and then one should meditate on the gemstone as a symbol of Mercury. After meditation one should wear the ring on the little finger or the ring finger of the right hand.

Afterwards the yantra should be wrapped in the green cloth and either donated to a priest or kept in a shrine.

The yantra to be drawn on the cloth and engraved on the bronze plate is the same, as follows :

9	4	11
10	8	6
5	12	7

Source

India: In ancient Indian scriptures the sites quoted for the emerald are as follows: the Maha Nadi (the word nadi means river. Emeralds were found in the mountains near these rivers), the Son Nadi, Gandak, the Sindh Nadi, the Himalayas, and the Girnar mountains of Mount Abu.

Emeralds found in Udaipur (Rajasthan) have a dark color but are very brittle. Emeralds found in Ajmer are of a pale green color and are very attractive, but as the color is not so deeply green they are not among the most highly priced emeralds.

Pakistan: Emeralds found in Pakistan are deep green and brittle.

Colombia: These are compact and rich in color and lustre. The old mines produced more lustrous and better colored emeralds than those of the new mines.

Africa: African emeralds are dark in shade and have many black spots. Their color is very much like the color of green beer bottles.

Emeralds are also found in Egypt, Brazil, Soviet Union, Afghanistan.



Yellow Sapphire ~ Pukhraj

A gem of the corundum family, yellow sapphire...

Yellow Sapphire ~ Pukhraj

A gem of the corundum family, yellow sapphire is a twin of ruby and blue sapphire. It is found in yellow, golden, and orange colors, as well as in a colorless variety known as white sapphire. The best gem is said to be of lemon-yellow color.

Click the properties below for more info.



General

Following are the general properties of Gemstone

Planet	:	Jupiter
Cosmic Color	:	Light Blue
Sign	:	Sagittarius, Pisces
Element	:	Ether
Time	:	Sunset
Day	:	Thursday
Metal	:	Yellow Gold

Signs of well-placed Gemstone

- Wisdom, longevity
- Happiness
- Wealth, name, fame, success and honor
- Good children and grandchildren

The gemstone helps to prevent the following diseases :

- Liver complaints, jaundice, dropsy, flatulence, dyspepsia, abscess.
- disorders of pancreas, tumors, skin troubles, cerebral congestion.
- catarrh, circulation of blood in the arteries and fat in the body.

Qualities

- Uniformity of color, without any layers
- Regular shape
- Pleasant appearance
- Transparency, which makes it clean and pure
- Rich velvety lustre that can be seen with the naked eye
- Solidity, hardness
- Smooth feel
- Self-luminous quality: it should emit light all over its surface
- Evenness in surface, without any variations in thickness
- Heaviness or high specific gravity that can be felt when placed on the palm.

Flaws

- A hole, slit, or cavity inside the gem - brings poverty and bad luck
- Dullness - harmful for health
- Crack inside the gem - creates fear of thieves
- Fibers in the texture - create problems in the family
- White spots - shorten life span
- Asymmetrical shape - brings bad luck
- Visible stains or black spots - gives sorrow
- Red spots - bring poverty and destroy wealth
- Roughness in touch - brings ill luck
- Milky appearance inside - harmful for progeny
- Dents or pits - bring bad luck and poverty
- Black spots - bring sorrow and destroy pets and cattle
- Grainy surface - brings bad luck
- Flimsy inside the substance of the gem - brings injuries
- Mixed color, brownish color, or dark yellow - brings suffering

- Dry-looking, because of the lack of fire and water - brings disease

Identity

- When placed on a white cloth and exposed to sunlight, it gives yellow hue to the spot where the light is reflected.
- If kept in milk for twenty-four hours it does not change color.
- It increases in brilliance when rubbed on a touchstone.
- A synthetic gem becomes warm soon when placed on the eyelids.
- The milky spots in a synthetic gem are dry and without brilliance, whereas in a real gem these milky spots are rich in flicker and lustre and have the gleam of fresh cow's milk.
- The lustre of a synthetic gem resembles the lustre of glass.
- All other gems of the same color and appearance have lower specific gravity, are less hard, and have a different refractive index than the yellow sapphire.
- It cures poisonous insect bites immediately if rubbed on the afflicted area.

Ritual

A yellow sapphire should be bought on a Thursday, in an ascending cycle of the Moon and when Pushya Nakshatra is present. If the nakshatra is not Pushya, then Punarvasu, Vishakha, or Purva Bhadrapad are also auspicious for buying a yellow sapphire. The gem should be given to the jeweler on the same day, between sun rise and 11.00 A.M.

The best time to wear a yellow sapphire ring is in the early morning.

Before wearing the ring for the first time it should be immersed in cow's milk for a few minutes and then it should be washed in rainwater, spring water, or water kept in a copper pot over night. After it has been washed, the ring should be placed on a yellow cloth upon which a Jupiter Yantra has been drawn with roli and a yantra (or idol of Jupiter in gold) engraved on a silver plate should be placed on the same cloth. One should offer flowers and incense to the engraved yantra and to the stone that has been set in the ring and then recite the mantra of Jupiter.

Mantra

Aum Brim Brahaspataye Namah Aum

The mantra should be recited either 108 or 19,000 times, as prescribed, and then the wearer should meditate on the gemstone as a symbol of Lord Jupiter. After meditation the ring should be worn on the first finger, which is the Jupiter finger, otherwise on the ring finger of the right hand.

The yantra that needs to be drawn on the cloth and on the silver plate is the same numerical yantra and is as follows :

10	5	12
11	9	7
6	13	8

A ring worn in the manner brings good luck, peace and prosperity. Pukhraj (yellow sapphire) bestows vigor, vitality, wisdom, longevity, name, and fame. If someone is having problems to finding a good mate for their daughter that problem will also be solved.

One who wears yellow sapphire progresses in the spiritual field and becomes free of all fears of evil vibrations, ghosts, and genii. Disease and madness caused by afflicted planets also are cured. As long as the ring is on one's hand one will never die an accidental death.

Source

The primary sources in India, as mentioned in its ancient scripture, are the Mahanadi and Brahmaputra rivers, the Himalayas, the Vindhyachal Mountains, Orissa, Bengal, and Kashmir.

Sri Lanka produces sapphires in yellow, light green, and colorless varieties in sufficient quantities.

Yellow and white varieties are also found in Indochina, in New South Wales and Queensland in Australia, and in Zimbabwe.

Yellow, smoky yellow, blackish, and colorless white sapphires are also found in Thailand.